

Thank you for purchasing the **SmartStopStart** module!

Please read this important information and keep this document with your vehicle owner's manual.

Installation Instructions for 2018 Pacifica

1. The ignition should be off. Open the passenger side sliding door.

Locate the interior color matched trim panel with the AC power outlet just above the floor near the passenger side door jamb. (Vehicles without the AC power outlet option will just have a blank panel there.) This panel is marked '1'.

Also locate the black trim panel on the passenger side 3rd row side console with a USB port and speaker. This panel is marked '2'.



2. Obtain a medium size flat-blade screwdriver and cover both sides of the blade with a folded over strip of duct tape as shown. This can be used as a substitute for the yellow plastic trim stick shown in the following photos below.



3. Insert the covered flat blade screwdriver in the seam at the lower right of the trim panel (1) and pry outward it until the lower clips release. Do not attempt to remove the panel yet and do not pry at the top.



4. Pull the loosened panel out from the bottom with your fingers to release remaining clips and then down to remove.



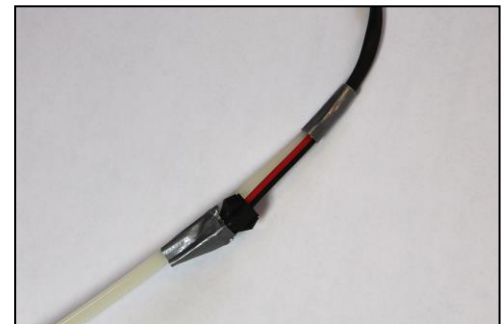
5. Insert the covered flat blade screwdriver in the seam at the top of the black 3rd row passenger side trim panel (2) and pry outward it until the upper clips release. Then simply pull the complete panel straight out toward you with your fingers until the remaining clips release.



6. Thread the thin end of the supplied 36" long zip-tie up from the lower opening (1) to until it emerges in the CENTER of the upper opening (2). Be patient, it may take a few tries.



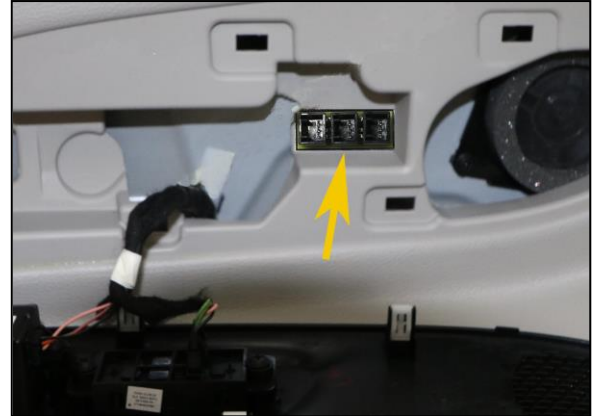
7. Cut two 1" strips of duct tape and tape the **SMALLER** black connector from the long black and red cable supplied to the thin end of the zip tie supplied as shown.



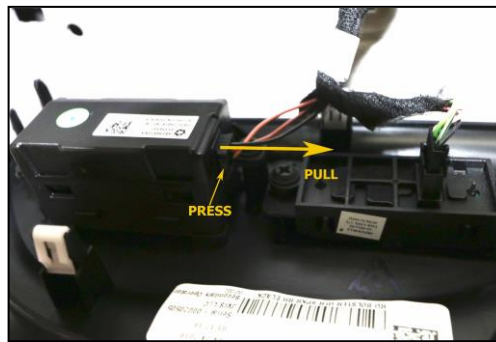
8. Pull the supplied long zip-tie with the supplied black and red cable with the **SMALLER** connector attached back out the lower (1) opening with the zip-tie.. Reposition it as necessary if it hangs up during the pull. Do not use excessive pulling force. STOP pulling once 3 or 4 inches emerge from the opening. Once the cable has emerged remove the tape and zip tie and leave the red and black cable in place with the smaller connector at the lower opening (1) and the larger connector at the upper opening (2). The long zip-tie can be discarded.



9. Peel the backing off of the Velcro strip on back and attach the provided 3-way connector hub in the upper (2) opening as shown:



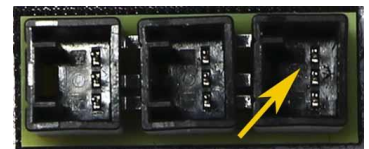
10. Continuing at the black panel removed at the upper opening (2), press the tab on the 3-wire connector at the back of the USB module and pull the connector out. Then re-insert this same connector in the leftmost position of the 3-way connector hub until it clicks.



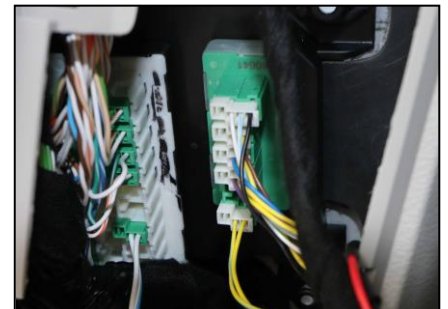
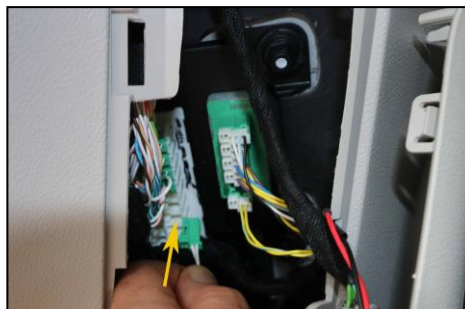
11. Plug one end of the provided 3-wire jumper cable into the USB module until it clicks. Plug the other end of the provided 3-wire jumper cable into the center position 3-way connector hub until it clicks.



12. Plug the **LARGER** connector on the 2-wire red and black cable pulled earlier into the rightmost position of the 3-way connector hub until it clicks.



13. Now at the lower opening (1), plug in the green plug from the *SmartStopStart* module into any open WHITE socket. Once inserted, give the cable a light tug to make sure it is locked in place.



14. Plug the black connector on the red and cable pulled earlier into the black connector from the *SmartStopStart* module. Note that it will only fit in one orientation.



15. Zip-tie the *SmartStopStart* module to a nearby wiring harness.



16. Carefully place and press panels (1) and (2) back into position.

17. Congratulations, *SmartStopStart* is now installed! You can now set it up. It will just take a few more seconds.

18. If you want if you want the Engine Stop Start to default to OFF, start the engine and press the Automatic Engine Stop Start Disable button on the lower console, as shown in the photo on the right. The button lights when the Engine Stop Start is disabled. Press the button again at any time with the engine running to change the default to ON.

Note: There may sometimes be a flash or brief delay of the Engine Stop Start button amber light immediately after engine start before it settles into the set state.



19. We recommend that you unplug the red/black *SmartStopStart* cable from the lower opening (1) prior to bringing the vehicle in for service. This approach allows for rapid deactivation of the module, so the vehicle will behave just like it did for original factory operation. This will avoid confusing the service technician with the changed behavior of the vehicle.

(Note: Per the Magnusson-Moss Warranty Act, a manufacturer can only deny a warranty claim when an aftermarket component is installed if the dealer or manufacturer can prove that the aftermarket component caused the fault in question. An additional reason we recommend deactivating or removing the module prior to bringing the vehicle in for any service is simply to avoid any possible question ever arising from lack of knowledge of this product by the servicing dealer.)

20. The module can be reconnected at any time if it had been deactivated. Your previous setting is retained in non-volatile memory and restored the next time you start the engine.